

ARCHITECT  
**A+I**  
DESIGN  
ARCHITECT + INTERIOR DESIGNER + PLANNER  
info@aplusdesign.com  
www.aplusdesign.com



 **KINGS**<sup>®</sup>  
DEVELOPERS LIMITED

enhancing lifestyle ●●

TEL: +254-20-2044619, 20, 2066546  
EMAIL: info@kingsdevelopers.com

[www.kingsdevelopers.com](http://www.kingsdevelopers.com)

DISCLAIMER: Perspectives shown in the Brochure are an artistic impression. The plans are subjected to changes / modifications / amendments (without notice) for better layout, as per suggestions of the Architects and/ or as per requirement of the Nairobi Council and/ or all other concerned authorities. All the amenities, facilities etc., are subject to the approval of the concerned authorities and subject to the changes, if required. Some renderings and maps are artist's impressions and not actual depictions of the buildings or landscaping. A developer does not warrant or assume any legal liability or responsibility for the accuracy or completeness of any information disclosed.

Also Note: The Room Layout, Plans, Photos shown with Furniture and other electronic gadgets are for representation only for an easier visualization of the layout.

design@kingsgraphics.com



**KINGS**  
**PRISM**  
*Business Reflections*



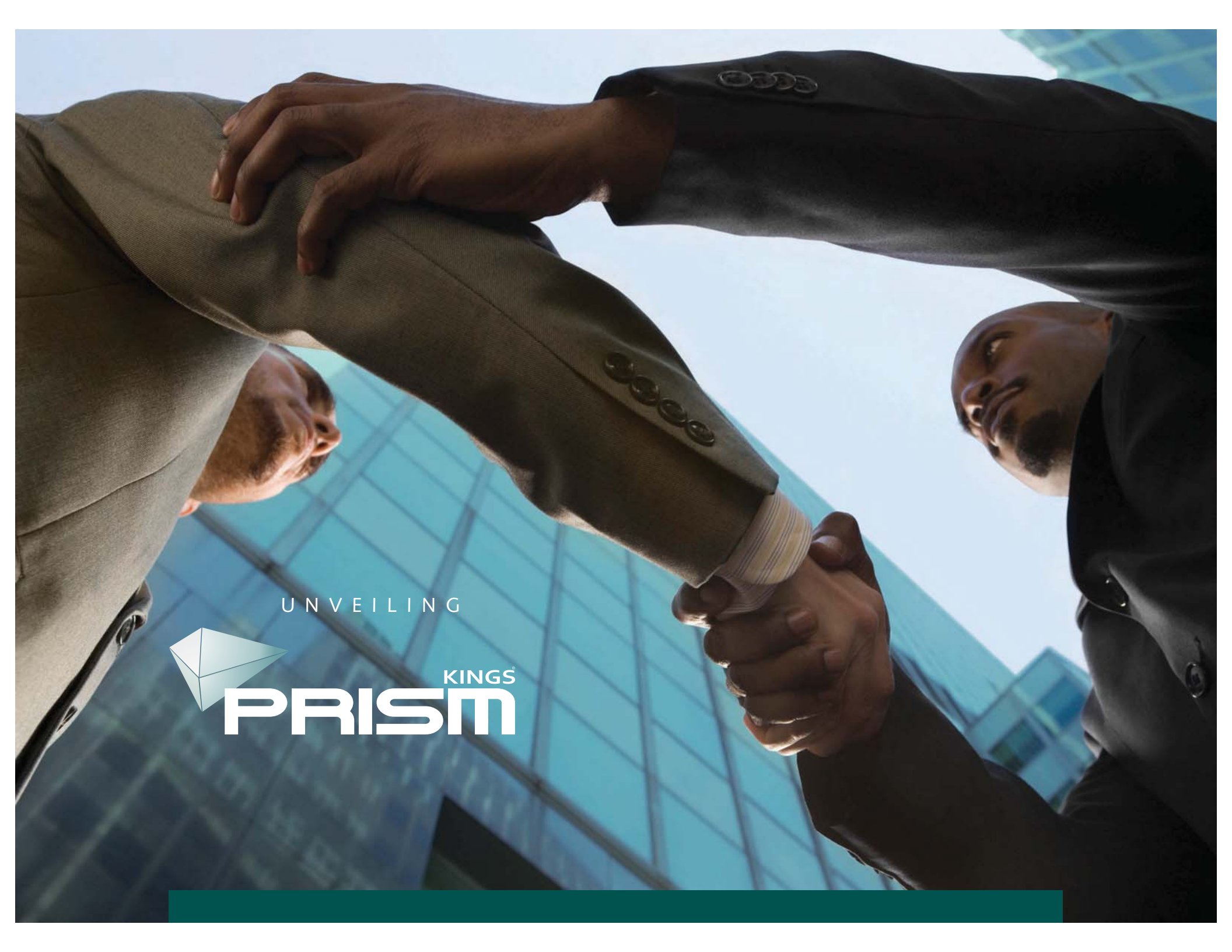
WITNESS

A NEW BUSINESS REFLECTION  
IN NAIROBI



A PROJECT BY:





UNVEILING



KINGS<sup>®</sup>  
**PRISM**





# An iconic landmark takes shape.

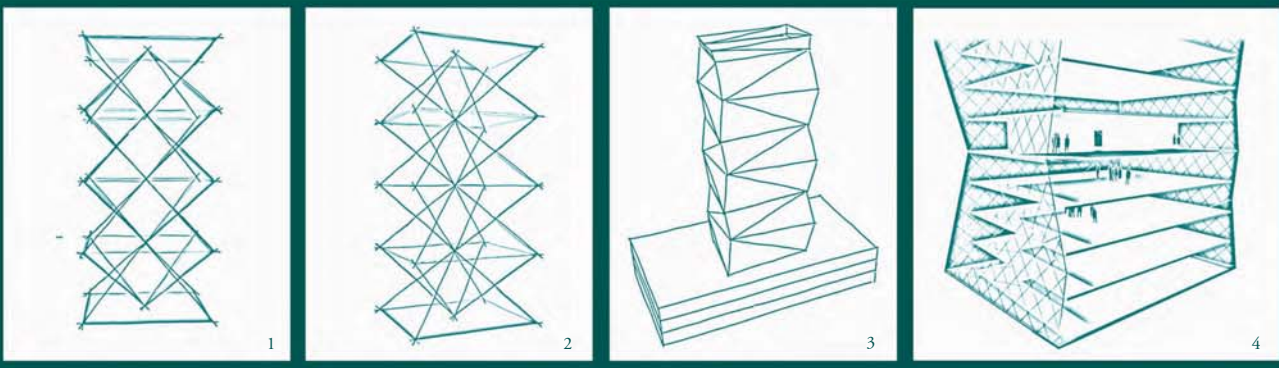
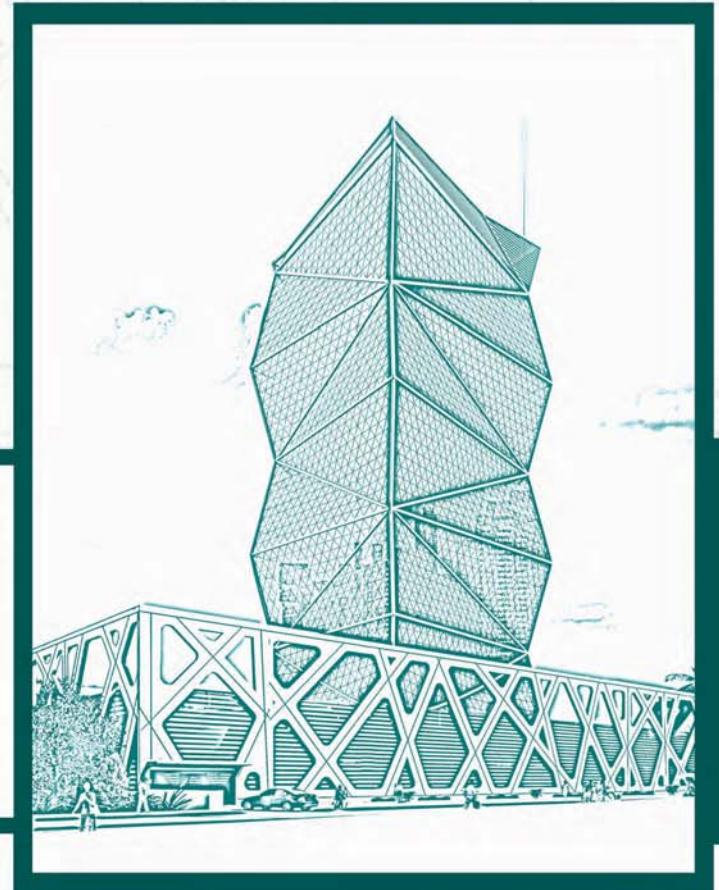


Hand-picked location.  
For companies on the rise.  
Presenting Nairobi's most unique corporate business tower.  
Located just where any growing company should be.  
The landmark tower stands high in the most well-connected new business district of Nairobi.

Nairobi has been recognised globally as the hub for business and development on the African continent.

# the prismatic thought and the elevation

The strategic location and breathtaking scenery make Nairobi a jewel of Africa  
The concept of Jewel is the inspiration for design and architecture behind the making of this iconic tower.  
Across the region as a tribute to this magnificent city, the building profile has been designed to appear as prisms stacked upon prisms  
Where an incident ray of light passes through the prismatic facets of a fine-cut jewel, a spectrum of vivid colours emerge.  
The Prism tower is a jewel, the client's vision provides the ray of light and the creative productivity of Nairobians is the spectrum of colours.



Make first impressions count with your associates and prospective clients, even before they enter your office.

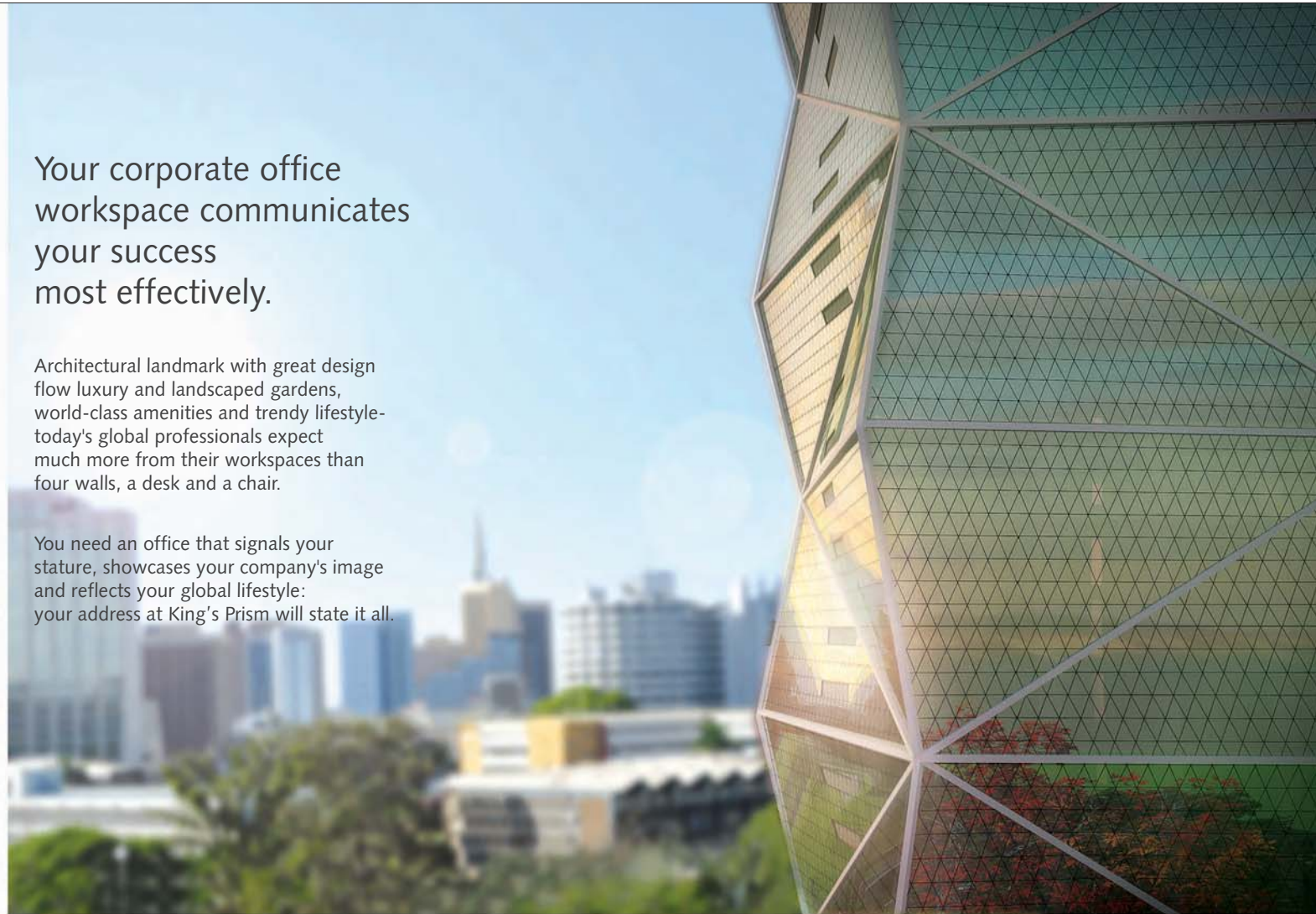


# Announce your company's success.

Your corporate office  
workspace communicates  
your success  
most effectively.

Architectural landmark with great design  
flow luxury and landscaped gardens,  
world-class amenities and trendy lifestyle-  
today's global professionals expect  
much more from their workspaces than  
four walls, a desk and a chair.

You need an office that signals your  
stature, showcases your company's image  
and reflects your global lifestyle:  
your address at King's Prism will state it all.



 **KINGS  
PRISM**  
BUSINESS REFLECTIONS

Imagine yourself drawing up ambitious plans and breakthrough strategies, Light pouring in through large glass panes in your spacious office.

Imagine further, that you are among the selected few on the top floor of King's Prism, surveying the city from your cabin.

And you'll know what makes King's Prism an office custom-made for corporate Kenya's upcoming stars.

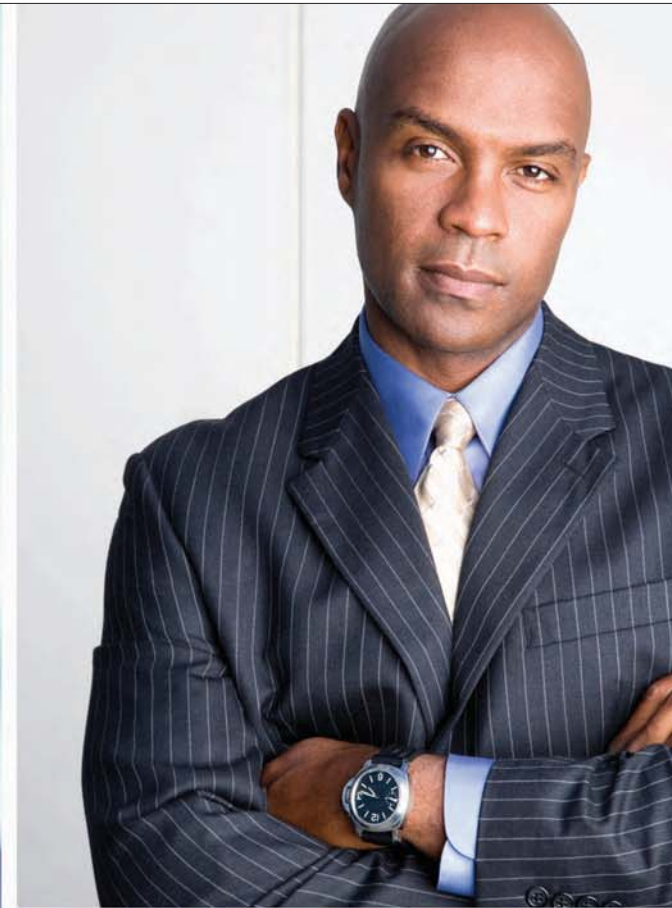




At Prism you can finally enjoy the pleasure of focusing on what you do best. While everything else like maintenance, security and parking is taken care of efficiently.

At Prism the professional management company will ensure that every facility is perfectly maintained. Following the highest international benchmarks of security, every person and vehicle entering Prism is subjected to rigorous checks before being allowed access to the building.

Every visitor is registered and screened by a metal detector. At the building entrance, swipe card entry ensures controlled access at all times. And 24x7 CCTV monitoring keeps a close watch on visitors.





Guided by a strong moral and corporate code, King's Prism incorporates a range of environment-friendly systems. Rainwater harvesting systems ensure that our precious natural resource is conserved and re-used to keep the surrounding landscape lush and green. Large windows make the most of the available natural light, reducing lighting costs and unnecessary energy consumption. Environment-sensitive planning that brings down a company's costs, while it enhances the atmosphere you work in.



## Energy-efficient. Resource-efficient.

- Intelligent light control system (motion Sensors) at public area
- Water saving bathroom fixtures
- Rain water harvesting
- Energy-efficient glass façade exterior to minimize heat gain
- LED lights for exterior and interior common area which consume only fraction of energy compared to normal lighting fixtures



## Spacious in plan

Every office has been designed to give you the maximum column-free space to maximize space efficiency, while the generous floor-to-floor height enhances the ambience.





A seminar, convention or training workshop?  
Look no further than King's Prism  
for its impressive 20-seater Seminar Room.  
King's Prism gives you possibly the finest work environment,  
at the most desirable address in Nairobi.

treat me at the c@fe

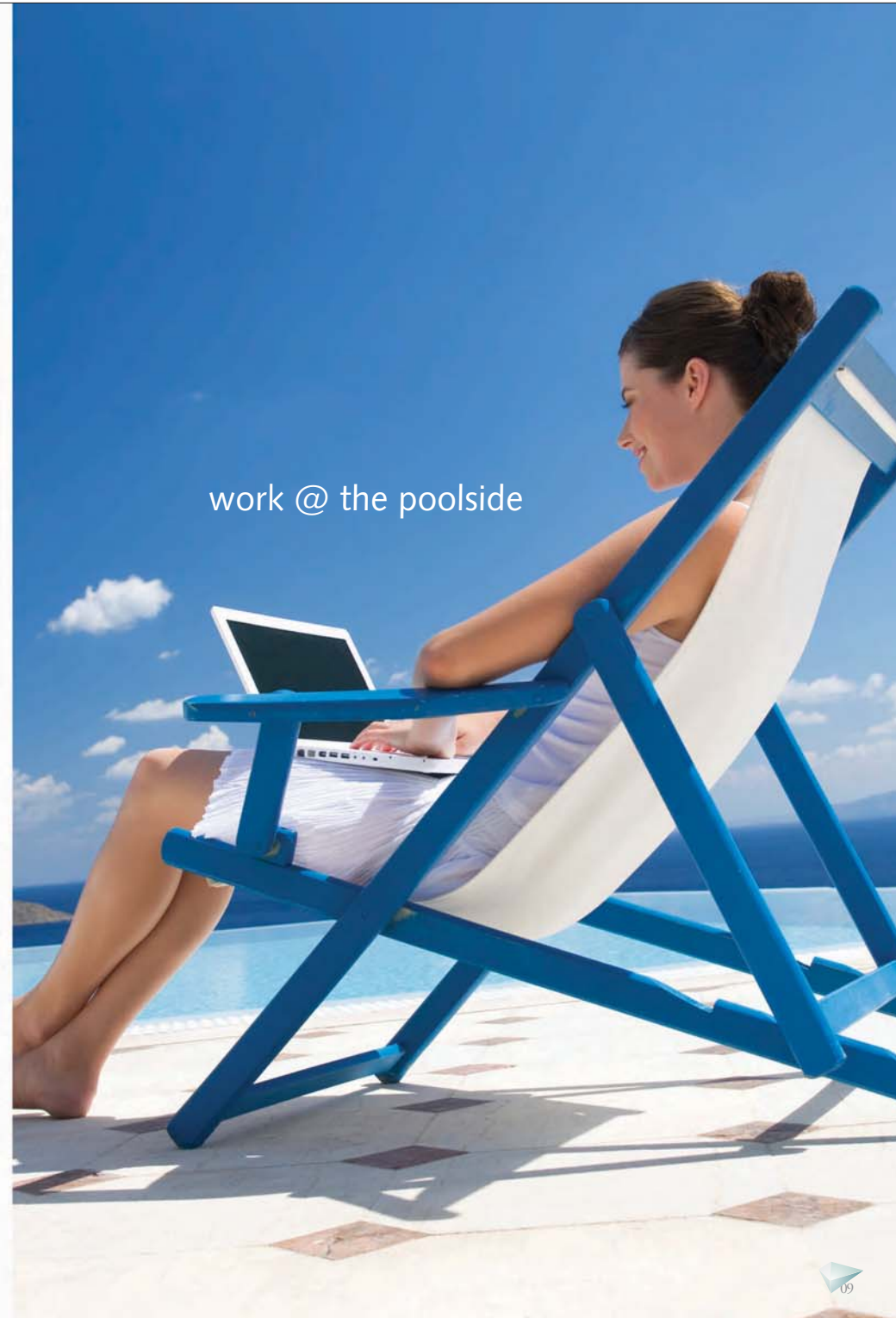
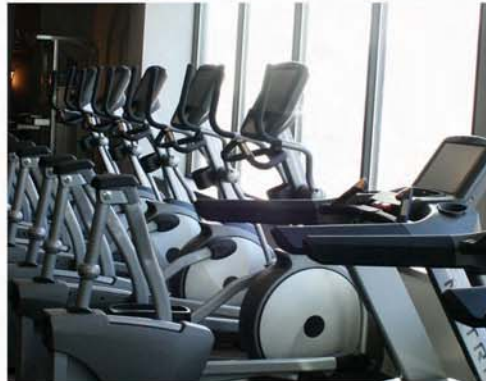


There is a restaurant,  
to meet, greet and  
conspire ideas, projects  
that will develop slowly  
into a lunch break.

# De-stress after a meeting

Just step outside  
your office.

That the best ideas often happen during a break. At King's Prism, there's plenty of opportunity for inspiration to strike. Feel like having a walk in the garden? We have beautifully landscaped gardens inviting you to refresh, revive and recharge. A state-of-the-art gym, steam, sauna and swimming pool invigorates you for the day ahead.



work @ the poolside



# The Corporate Perks

5-levels of parking's  
1-level of reception recreational & restaurant  
24-level of office spaces,

Offices from 6th floor upwards,  
ensuring stunning view and minimal noise

Restaurant with indoor and outdoor sitting

Swimming pool & Gym for recreation  
Separate Sauna, Steam and lockers for men and women  
Podium level garden with outdoor sitting area  
(Amphitheater)  
Seminar room for 20 people

Fire Alarm System  
Emergency lighting system  
Floor trunking distribution system  
Closed circuit TV system  
Public address / music system (PA/BGM)  
Backup power system (Diesel Generator)  
Separate service elevator

Offices sizes from medium to large space  
Provision for own toilet and pantry inside the offices  
Separate designer bathroom for ladies and gentlemen  
on each floors  
Designer lobbies and reception area



Located just where a growing company should be



- Located strategically on 3rd Ngong Avenue Road, Milimani
- Close proximity to most government offices
- A 5-minute walk to Kenyatta National Hospital
- 10 minutes drive to City Centre / The Junction
- 20 minutes drive to Westlands

- Easily accessible using the public transport system
- Good health facilities like Nairobi Hospital, Nairobi Hospice, Nairobi women's Hospital and K.N.H are all within a walking distance.
- Very good location for doing corporate business/ or running SMEs.